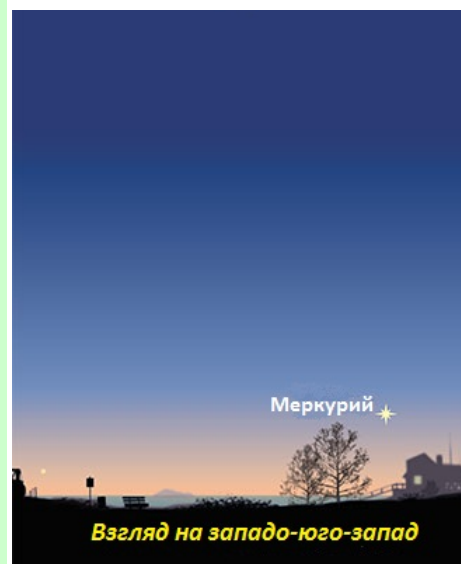
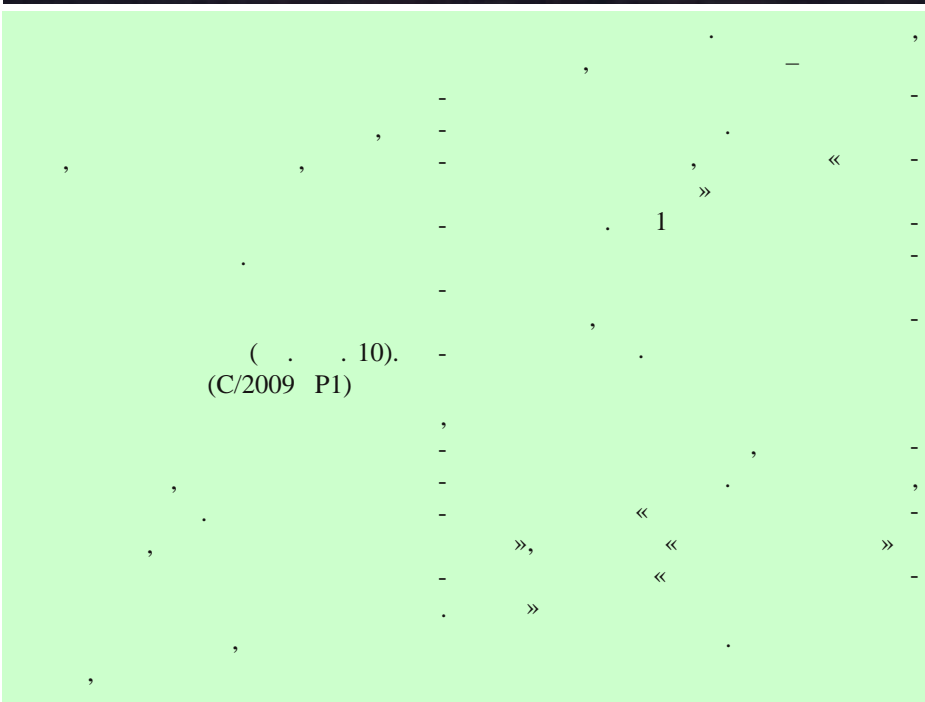




АСТРОНОМИЧЕСКАЯ ГАЗЕТА

№4 (44)
20 февраля 2012 года



Meade ETX 80 AT



Meade – ETX.
 ETX 6
 3
 (ETX 60/70/80),
 (ETX
 90/105/125).

Meade ETX 80 AT,
 1.25"

1.45x,
 : 15x, 23x, 30x, 41x, 61x
 82x.

AUTOSTAR,
)

2
)

50 : 26-
 (15-)
 9.7- (41).

1.25"
), 1.45x,
 : 15x, 23x, 30x, 41x, 61x
 82x.

(
)

« »
)

45
)



Meade ETX 80



Autostar.

1.25";

1400

80

1 2

6

100,

5

115

200x,

240

1D

(80)

70

1:10.

20

+10°

-15°C

100

200

100

?

125

() Meade Superplossl 6.4mm

S4000.



80

:

, 11

),

70 73

9

6

,2

100x.

«

»

76

33%

ETX 80

9

;

7

13

ETX 60 ETX 70.
ETX 90/105/125

(0.4m)

125x.

42

(32

)

200-

20-

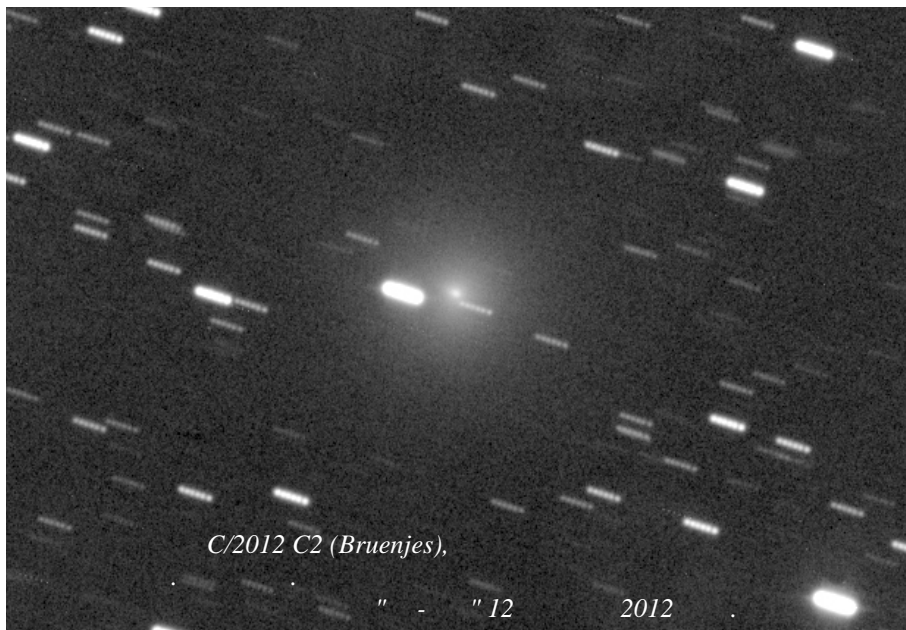
ОПШ

7 50)

«

»



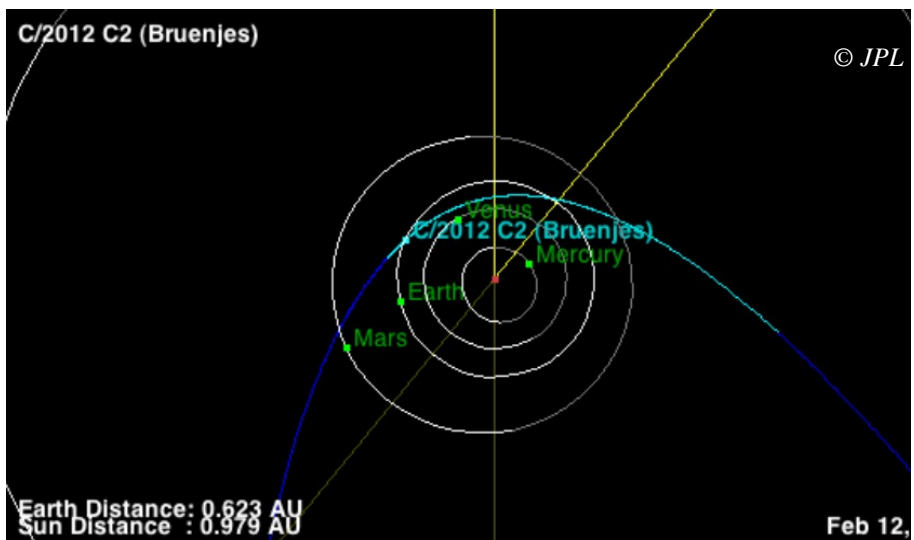


NEOCP,
 C/2012
 C2 (Bruenjes),
 0.6
 12-13m.
 163°
 6°)

10 2012

14-
 Meade
 LX200GPS,

C/2012
 C2 (Bruenjes).

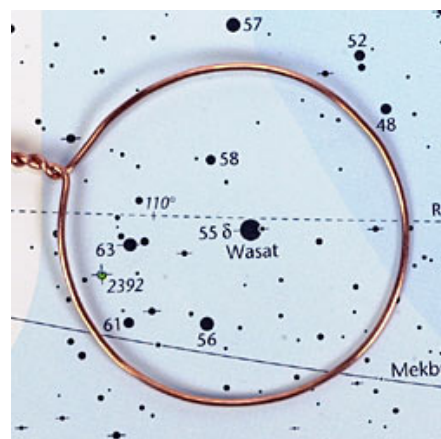
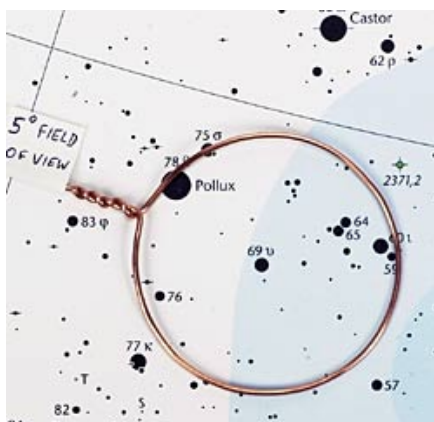


(2012) 2 (42)

59 60

- 64 65
4

2000.0 Sky Atlas
NGC 2392,



56 63

60

(59)

63 61

« » -



57

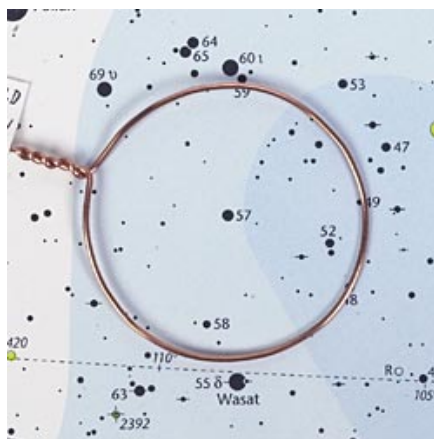
NGC 2392.

()
75 ()

69 ()

75

69



69

«Sky & Telescope»

The globular cluster Messier 68



Two Micron All Sky Survey
- Southern Facility -
2MASS Atlas Image Mosaic

Infrared Processing and Analysis Center/Caltech & University of Massachusetts

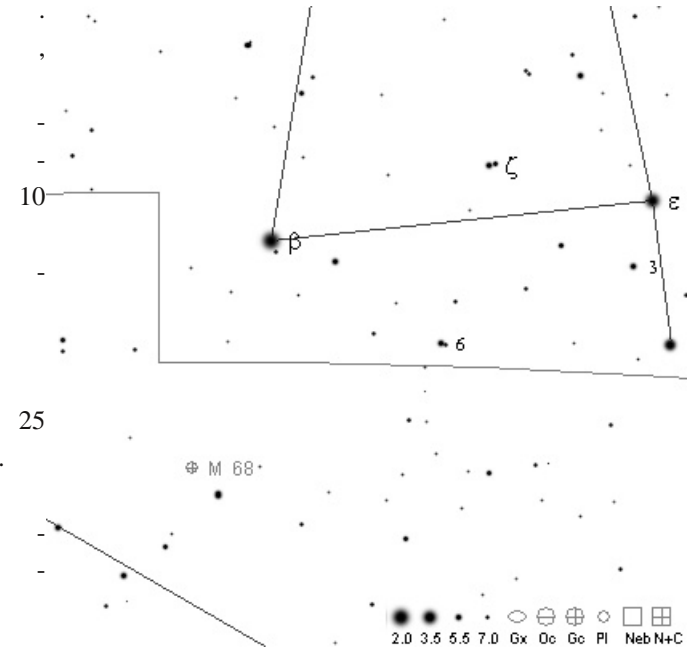
68 (NGC 4590)

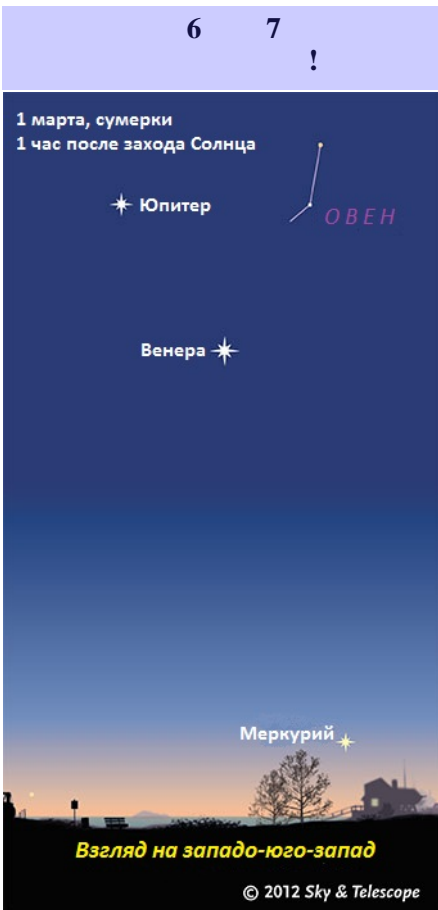
.....120 . 0.5 500 . 10'.
11'
36.600 .
 RA.....12 39.5
 DEC.....-26° 45'
7.6m

c 9
 1780 : «
 6- ».
 68 , 42
 , 68
 12m.
 7.6m (')

8.2m ().
 68 « »
 10x50
 68 5
 -26°.
 8

Stoyan R. et al. Atlas of the Messier Objects: Highlights of the Deep Sky — Cambridge: Cambridge University Press, 2008.





2012

()

37°

45

Sky&Telescope

30-60

():

- (-10m)
- (-4.3m)
- (-2.2m)
- (-1.4m)
- (-1.2m)
- (-0.7m,

37° . .)

1	2012	«
»		(
2012)	1
1		-20
1		-38
3		-108
6		-198
9		-270
«		»

agaz@list.ru

! !

() -16 0.55

WebMoney:
 Z103010134998
 R374859142990
 41001728330366

« 4 (44), 20 2012 »

: <http://www.waytostars.ru/index.php/gazeta>

« »:

<http://www.severastro.narod.ru>
 : agaz@list.ru